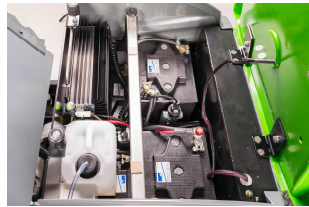


GANSOW GMBH 95BF68 PREMIUM RIDE ON SCRUBBER DRIER



TECHNICAL DATA

24 V = 4 x 6 V/180 Ah Batteries
On board charger, 24V/25A
Integrated chemical dosing system
GWS and Eco mode
Automatic filling system
Clean water tank; 95 liter
Dirt water tank; 100 liter
Working width; 68 cm
1445x680x1205mm (length x width x high)
Weight; 237kg (w/o. batteries and w/o. water)
Max. speed; 6 km/hour
Traction motor; 500 W
Brush motor; 2 x 300W; 215 rpm
Brushes; 2 x 345mm
Suction motor; 550W
Running time; 3 hours
Theoretical performance; 4.080 m²/hour
Practical performance; 3.470 m²/hour



GANSOW

made in GERMANY

BE GREEN 2 CLEAN